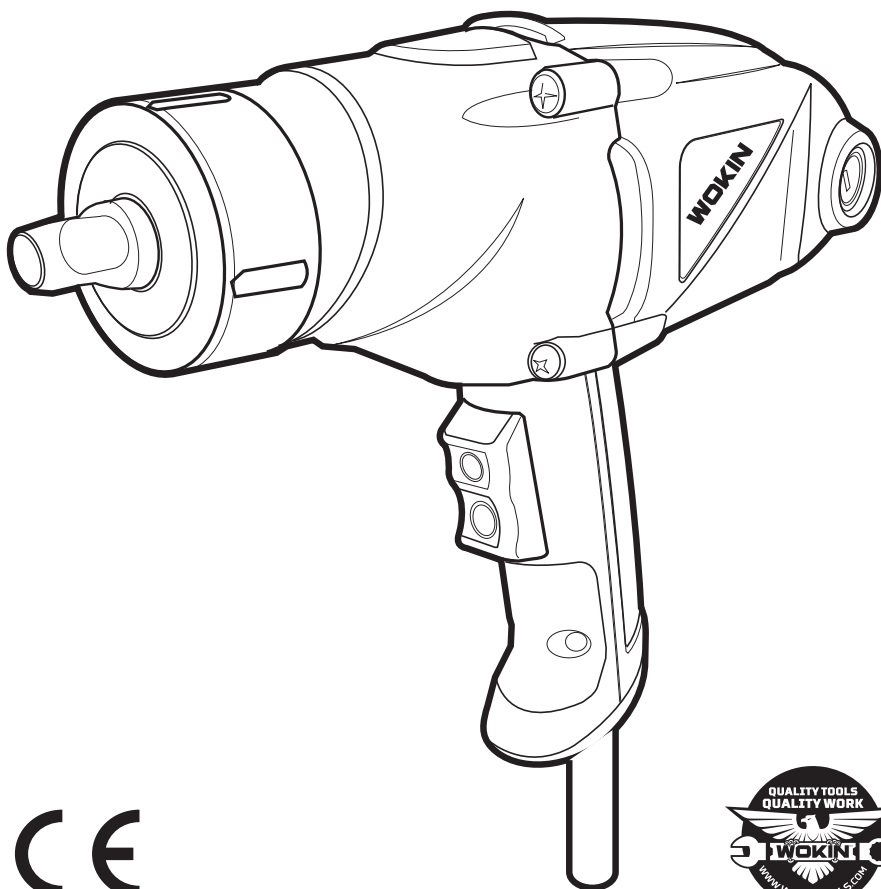


WOKIN

797550

IMPACT WRENCH INSTRUCTION MANUAL

1010W
230-240V
~50Hz



SAVE THIS MANUAL!

You will need this manual for safety instructions, operating procedures and warranty.
Put it and the original sales receipt in a safe dry place for future reference.

IMPORTANT SAFETY INFORMATION

General Power Tool Safety Warnings

WARNING:

Read all safety warnings and all instructions Failure to follow all warnings and instructions may result in electric shock, fire and/or serious injury.

Save all warnings and instructions for future reference.

The term “power tool” in the warnings refer to your mains operated (corded) power tool or battery operated (cordless) power tool.

Work area safety

1. Keep work area clean and well lit. Cluttered and dark areas invite accidents.
2. Do not operate power tools in explosive atmospheres, such as in the presence of flammable liquids, gases or dust. Power tools create sparks which may ignite the dust or fumes.
3. Keep children and bystanders away while operating a power tool. Distractions can cause you to lose control.

Electrical safety

1. Power tool plugs must match the outlet. Never modify the plug in any way. Do not use any adapter plugs with earthed (grounded) power tools. Unmodified plugs and matching outlets will reduce risk of electric shock.
2. Avoid body contact with earthed or grounded surfaces such as pipes, radiators, ranges and refrigerators. There is an increased risk of electric shock if your body is earthed or grounded.
3. Do not expose power tools to rain or wet conditions. Water entering a power tool will increase the risk of electric shock.
4. Do not abuse the cord. Never use the cord for carrying, pulling or unplugging the power tool. Keep cord away from heat, oil, sharp edges or moving parts. Damaged or entangled cords increase the risk of electric shock.
5. When operating a power tool outdoors, use an extension cord suitable for outdoor use. Use of a cord suitable for outdoor use reduces the risk of electric shock.
6. If operating a power tools in a damp location is unavoidable, use a residual current device (RCD) protected supply. Use of an RCD reduces the risk of electric shock

Personal safety

1. Stay alert, watch what you are doing and use common sense when operating a power tool. Do not use a power tool while you are tired or under the influence of drugs, alcohol or medication. A moment of inattention while operating power tools may result in serious personal injury.
2. Use safety equipment. Always wear eye protection. Protective equipment such as dust mask, non-skid safety shoes, hard hat, or hearing protection used for appropriate conditions will reduce personal injuries.
3. Avoid accidental starting. Ensure the switch is in the off position before plugging in. Carrying power tools with your finger on the switch or plugging in power tools that have the switch on invites accidents.
4. Remove any adjusting key or wrench before turning the power tool on. A wrench or a key left attached to a rotating part of the power tool may result in personal injury.
5. Do not overreach. Keep proper footing and balance at all times. This enables better control of the power tool in unexpected situations.
6. Dress properly. Do not wear loose clothing or jewellery. Keep your hair, clothing and gloves away from moving parts. Loose clothes, jewellery or long hair can be caught in moving parts.
7. If devices are provided for the connection of dust extraction and collection facilities, ensure these are connected and properly used. Use of these devices can reduce dust related hazards.

Service

1. Have your power tool serviced by a qualified repair person using only identical replacement parts. This will ensure that the safety of the power tool is maintained

Impact Wrench Safety Warnings

1. Hold the power tool by insulated gripping surfaces, when performing an operation where the fastener may contact hidden wiring. Fasteners contacting a "live" wire may make exposed metal parts of the power tool "live" and could give the operator an electric shock.
2. Wear ear protectors.
3. Check the impact socket carefully for wear, cracks or damage before installation.
4. Hold the tool firmly.
5. Keep hands away from rotating parts.
6. Do not touch the impact socket, bolt, nut or the workpiece immediately after operation. They may be extremely hot and could burn your skin.
7. Always be sure you have a firm footing. Be sure no one is below when using the tool in high locations.
8. The proper fastening torque may differ depending upon the kind or size of the bolt. Check the torque with a torque wrench.
9. Make sure there are no electrical cables, water pipes, gas pipes etc. that could cause a hazard if damaged by use of the tool.

SPECIFICATIONS

Technical specifications

Power	1010W
Rated Voltage	230-240V
Frequency	50Hz
No Load Speed	n_0 : 2200/min
Max Torque	500N·m



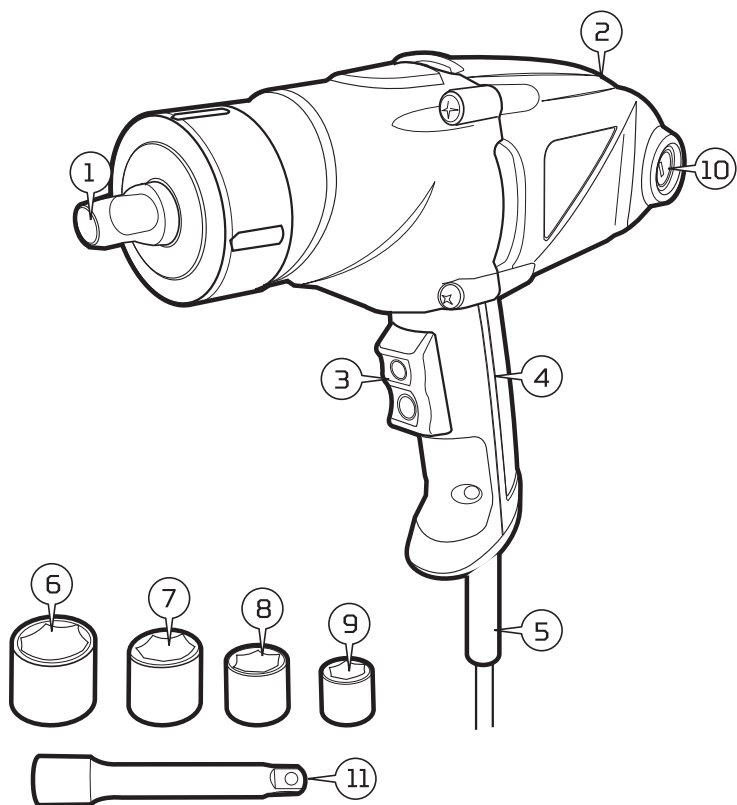
Note: Symbolology

Pay attention to all the signs and symbols shown in these instructions and on your tool. Make a note of these signs and symbols. If you interpret the signs and symbols correctly, your work with the machine will be safer and better.

	Read the instructions for use before starting the machine.
	Wear safety goggles.
	Wear ear protection.

	Wear good quality, strong gloves.
	Always use breathing apparatus when machining materials which generate dust.
	WARNING

FUNCTIONS



1. 1/2" Drive.

2. Air Outlet.

3. Forward/ Reverse Trigger.

4. Handle.

5. Power Cord.

6. 22mm Socket

7. 21mm Socket.

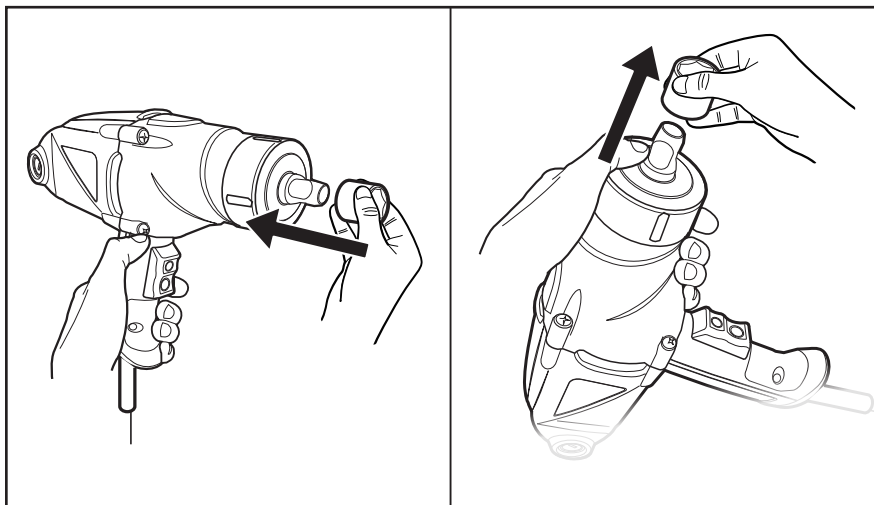
8. 19mm Socket.

9. 17mm Socket.

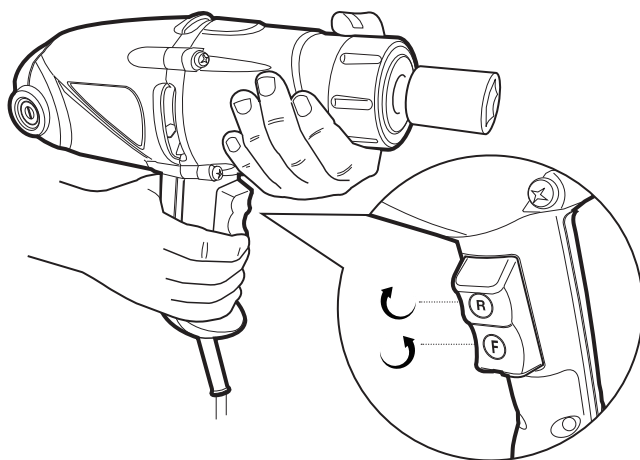
10. Brush Cap

11. 1/2 inch 125mm socket adapter

Assembly



Working Position



Do not rapidly change direction, wait for the tool to come to a complete stop.

Operation

1. **Removing Lug Nuts :** Ensure your vehicle is parked on safe level surface, away from moving traffic.
2. Ensure the parking brake is applied and that the wheels are blocked so the vehicle cannot move.
3. Select a suitable sized socket for the wheel lug nut.
4. **CAUTION: Only use Sockets that are suitable for impact wrenches.**
5. Jack the vehicle using a suitable jacking point, place jack stands (recommended by the vehicle manufacture) under the vehicle.
6. It is recommended that you use a manual breaker bar or torque wrench to loosen the locking wheel nuts first.
7. Set the directional switch to R and carefully loosen the lug nut.
8. Remove the lugs nuts in the order recommended by the manufacture.
9. Remove the Wheel.
10. **Reinstalling Lug Nuts :** Place the wheel back onto the hub and align the holes.
11. Insert lug nuts and hand tighten, then use the Impact Wrench to tighten by pressing {F} on the Trigger.
12. Finally using a torque wrench tighten to the manufactures recommendations.
13. Remove the jack stands and carefully lower the vehicle.
14. **Important: Ensure you use a torque wrench after using the impact wrench to correctly and safely set the lug nut.**
15. **IMPORTANT: Avoid excess use of the Wrench.**
16. When tightening a nut/bolt, never allow the Wrench to impact more than 8 times to avoid over tightening.

Cleaning & Maintenance

1. Never soak or immerse electrical components and or a component that has a plug attached.
2. Disconnect the plug from the power source before making any adjustments, changing accessories, or storing. Such preventive safety measures reduce the risk of starting the power tool accidentally.
3. Ensure the motor has fully stopped before cleaning, clearing a blockage, checking, or carrying out any maintenance on the tool.
4. Maintain your power tool. Check for misalignment or binding of moving parts, breakage of parts and any other condition that may affect the power tool's operation. If damaged, have the power tool repaired by a qualified repair person before use. Many accidents are caused by poorly maintained power tools
5. Keep cutting tools sharp and clean. Properly maintained cutting tools with sharp cutting edges are less likely to bind and are easier to control.
6. Regularly check external nuts and fixings to ensure vibration caused by normal use has not begun to loosen them. Store idle power tools out of reach of children and do not allow persons unfamiliar with the power tool or these instructions to operate the Breaker.
7. Locate the power tool out of reach of children, in a dry, locked unit.
8. Make sure that the cord is located so that it will not be stepped on, tripped over, or otherwise subjected to damage or stress.
9. Remove the plug from the mains socket / battery (where applicable) before carrying out any adjustment or maintenance.
10. Always store the power tool/machine in a dry place. If the power cord is damaged, it must be replaced by a qualified service technician.
11. Keep the ventilation slots and motor housing as free of dirt and dust as possible (where applicable). Clean the power tool/machine by rubbing it with a clean cloth and blow it clean using low-pressure compressed air is recommended.

TROUBLESHOOTING

Problem	Possible causes	Likely Solutions
Tool will not start.	<ol style="list-style-type: none"> 1. Cord not connected. 2. No power at outlet. 3. Tool's thermal reset breaker tripped (if equipped). 4. Internal damage or wear. (Carbon brushes or switch, for example.) 	<ol style="list-style-type: none"> 1. Check that cord is plugged in 2. Check power at outlet. If outlet is unpowered, turn off tool and check circuit breaker. If breaker is tripped, make sure circuit is right capacity for tool and circuit has no other loads 3. Turn off tool and allow to cool. Press reset button on tool 4. Have technician service tool and/or replace Carbon Brushes.
Tool operates slowly.	Extension cord too long or wire size too small.	Eliminate use of extension cord. If an extension cord is needed, use one with the proper diameter for its length and load.
Performance decreases over time.	<ol style="list-style-type: none"> 1. Accessory dull or damaged. 2. Carbon brushes worn or damaged. 	<ol style="list-style-type: none"> 1. Keep cutting chisels sharp. Replace as needed. 2. Replace Carbon Brushes.
Excessive noise or rattling.	Internal damage or wear. (Carbon brushes or bearings, for example.)	Have technician service tool.
Overheating. Grounding section.	<ol style="list-style-type: none"> 1. Forcing tool to work too fast. 2. Blocked motor housing vents. 3. Motor being strained by long or small diameter extension cord. 	<ol style="list-style-type: none"> 1. Allow tool to work at its own rate. 2. Wear ANSI-approved safety goggles and NIOSH-approved dust mask/respirator while blowing dust out of motor using compressed air. 3. Eliminate use of extension cord. If an extension cord is needed, use one with the proper diameter for its length and load.



Follow all safety precautions whenever diagnosing or servicing the tool. Disconnect power supply before service.

CE DECLARATION OF CONFORMITY

WE

ZJG WOKIN INDUSTRIAL CO.,LTD.
350 YANGJIN ROAD, ZHANGJIAGANG,
JIANGSU, CHINA

Declare that the product

797550
IMPACT WRENCH

Complies with the essential health and safety requirements of the following Directices:

EC Council Directive 2006/42/EC Machinery
Standards and technical specifications referred to:

EN 62841-1:2015+A11

EN 62841-2-2:2014

Afps GS 2019:01PAK

EN IEC 55014-1:2021

EN IEC 55014-2:2021

EN IEC 61000-3-2:2019+A1

EN 61000-3-3:2013+A1+A2

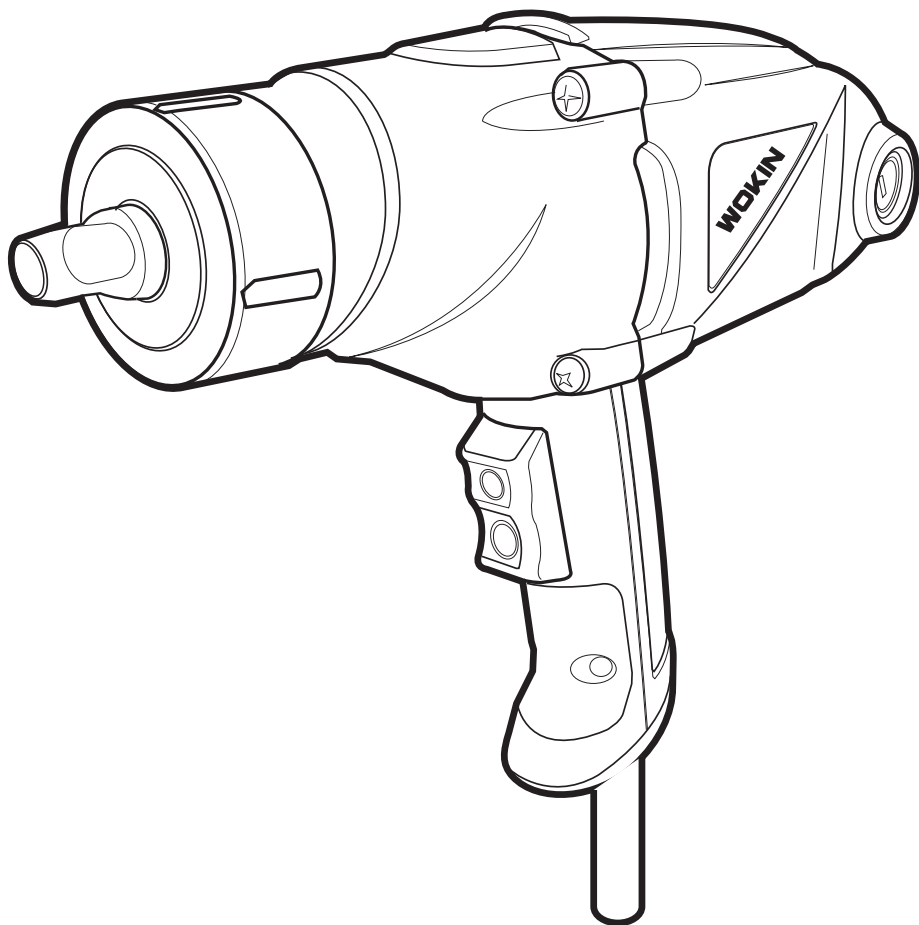
Authorised Signatory and technical file holder

Signed for and on behalf of:

ZJG WOKIN INDUSTRIAL CO.,LTD.
350 YANGJIN ROAD, ZHANGJIAGANG,
JIANGSU, CHINA
ZHANG XINGYU
Group Quality Director

on:16/04/2024

A handwritten signature in black ink, appearing to be 'Zhang Xingyu', enclosed within a large, stylized right curly bracket '}'.



**ZJG WOKIN
INDUSTRIAL
CO.,LTD.**

www.wokintools.com

**PROFESSIONALLY
MADE IN CHINA**

WOKIN is a trademark or
registered trademark of
WOKIN TOOLS.
All rights reserved.



4B28

[illegible]

[illegible]