

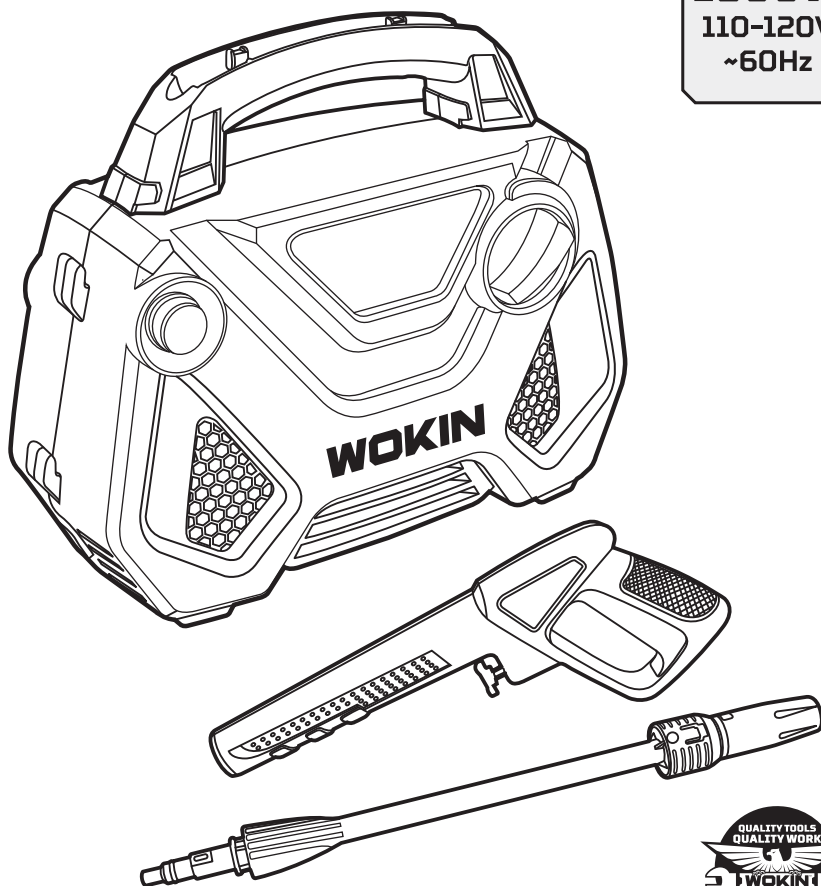
WOKIN

HIGH PRESSURE WASHER INSTRUCTION MANUAL

857216

135Bar
2000psi
Max.
pressure

1800W
110-120V
~60Hz



SAVE THIS MANUAL!

You will need this manual for safety instructions, operating procedures and warranty.
Put it and the original sales receipt in a safe dry place for future reference.

IMPORTANT SAFETY PRECAUTIONS

⚠ WARNING:

When using this product, basic precautions should always be followed, including the following:

1. If the supply cord is damaged, it must be replaced by the manufacturer, its service agent or similarly qualified persons in order to avoid a hazard.
2. The machines must not be used by children. Children should be supervised to ensure that they do not play with the appliance.
3. For commercial use
This machine must not be used by persons (including children) with reduced physical, sensory or mental skills or lack of experience and knowledge.
4. Not for commercial use
This machine can be used by persons with reduced physical, sensory or mental abilities or lack of experience and knowledge when they are supervised or safe use of the machine and understand the resulting dangers.
5. Use suitable personal protective equipment (PSA) for high-pressure cleaners in operation, Eg safety shoes, protective gloves, protective visors, hearing protection, etc., Operation of the appliance;

⚠ WARNING:

This machine has been developed for the use of the detergent supplied or recommended by the manufacturer. The use of other cleaning agents or chemicals can affect the safety of the machine.

⚠ WARNING:

High pressure jets can be dangerous if used improperly. The beam must not be directed at persons, active electrical equipment or on the machine itself.

1. Do not use the appliance with people within its range of action unless they are wearing protective clothing.
2. Do not point the jet at yourself or others to clean clothing or footwear.
3. Disconnect the power supply before carrying out maintenance by the user.
4. High pressure cleaners must not be operated by children or unskilled persons.
5. To ensure the machine safety, only original spare parts from the manufacturer or use spare parts approved by the manufacturer.
6. Do not use the appliance if a power cable or important parts of the appliance are damaged, e.g. Safety devices, high pressure hoses, spray gun.
7. If the extension cord is used, the plug and socket must be waterproof.

WARNING:

Unsuitable extension cables can be dangerous, if an extension cable is used, it must be suitable for outdoor use, and the connection must be kept dry and off the ground. Use of a power cable reel which keeps the socket at least 60mm above the ground is strongly recommended.

1. Switch the appliance off and disconnect it from the power supply before assembly, cleaning, adjustments, maintenance, storage and transportation.
2. The electric supply connection must be made by a qualified electrician and comply with IEC 60364-1. Either a residual current device that will cut off the power supply if the leakage current to earth exceeds 30 mA for 30 ms or a ground fault interrupt device must be installed.
3. **WARNING:** Do not use the machine if a connecting cable or important parts of the machine are damaged, Eg safety devices, high pressure hoses, spray gun. The machines are not suitable for connection to portable water pipes. Connect the machine to the water supply.
4. Use the device on a flat surface.
5. For security reasons, make sure you have a three-month control and maintenance. Before use, make sure that the filter and the nozzle. Make sure there is no contamination. After use, make sure there is no water in the pump and hose.
6. Overload protection:
When the nozzle is stuffed or the high pressure hose is knotted, the overload protection function automatically and the machine is switched off. After solving the fault, turn the switch back on and turn the machine back on.

IMPORTANT SAFETY PRECAUTIONS

1. Read all instructions before using the product. Save all safety instructions.
2. Do not operate the pressure cleaner when fatigued or under the influence of alcohol or drugs.
3. Risk of injection or injury do not direct the high pressure water stream at any people or animals.
4. Do not allow children to operate the pressure cleaner at any time.
5. To reduce the risk of injury, close supervision is necessary when the pressure cleaner is used near children.
6. Know how to stop the unit and reduce pressure immediately. Be completely familiar with the controls.
7. Stay alert always be aware of where you are directing the high pressure spray.
8. Keep cleaning area clear of all people.
9. Keep good footing and balance at all times do not overreach or stand on an unstable support.
10. The work area should have adequate drainage to reduce the possibility of a fall due to slippery surfaces.
11. Follow the maintenance instructions specified in the manual.
12. To reduce the risk of electrocution, keep all connections dry and off the ground. Do not touch plug with wet hands.
13. Adequate information about the nozzle to be used, the danger of the kickback force and the sudden torque on the spray assembly when opening the trigger gun.
14. It is recommended that the electric supply to this machine should include either a residual current device that will interrupt the supply if the leakage current to earth exceeds 30 mA for 30 ms or a device that will prove the earth circuit.
15. **WARNING** Do not use the machine within range of persons unless they wear protective clothing.
16. **WARNING** Risk of explosion Do not spray flammable liquids.
17. **WARNING** High pressure hoses, fittings and couplings are important for the safety of the machine. Use only hoses, fittings and couplings recommended by the manufacturer.
18. Water that has flowed through a back flow preventer is considered non-potable.

IMPORTANT SAFETY PRECAUTIONS

1. Intended for outdoor and household use only.
2. High-pressure hose can develop leaks from wear, abuse, kinking etc. Do not use a damaged hose.
3. Do not use the pressure cleaner in areas near combustible materials, combustible fumes, or dust.
4. Some chemicals or detergents may be harmful if inhaled or ingested causing severe injury. Use a respirator or mask whenever there is a chance that vapors may be inhaled. Read all instructions included with the mask so you are certain the mask will provide the necessary protection against inhaling harmful vapors.
5. Before starting the pressure cleaner in cold weather, check all of the parts of the equipment and be sure that ice has not formed. Do not store the unit anywhere that the temperature will fall below 0°C(32°F).
6. DO NOT MAKE ANY MODIFICATIONS TO ANY OF THE COMPONENTS! Units with broken or missing parts, or without the protective housing or covers should NEVER be operated.
7. Keep the high-pressure hose connected to the pressure cleaner and the spray gun while the system is pressurized. Disconnecting the hose while the unit is pressurized is dangerous, and may cause injury.
8. Always turn off the power disconnect or when the machine is left unattended.
9. Keep water spray away from electrical wiring or fatal electric shock may result.
10. Must be connected to the water supply before use, then open gun trigger and open the cleaner switch.
11. After the machine long-stalled again before use, please dial the few motor power is in the state of the impeller, and then start the machine according to operation instruction.

SERVICING OF A DOUBLE-INSULATED APPLIANCE

In a double-insulated product, two systems of insulation are provided instead of grounding. No means of grounding is provided on a double - insulated product, nor should a means for grounding be added to the product. Servicing a double-insulated product requires extreme care and knowledge of the system, and should be done only by qualified service personnel. Replacement parts for a double-insulated product must be identical to the parts they replace. A double-insulated product is marked with the words "DOUBLE INSULATION" or "DOUBLE INSULATED". Product may also be marked with symbol shown below.

USE OF EXTENSION CORDS

Use of an extension cord with this product is **NOT RECOMMENDED**. If you must use an extension cord, use only extension cords that are intended for outdoor use. These cords are identified by a marking "ACCEPTABLE FOR USE WITH OUTDOOR APPLIANCES, STORE INDOORS WHILE NOT IN USE." Use only extension cords having an electrical rating not less than the rating of the product. Examine extension cord before use. **DO NOT USE DAMAGED EXTENSION CORDS!** Do not pull on cord to disconnect from receptacle, always disconnect by pulling on plug. Keep cord away from heat and sharp edges. Always disconnect the extension cord from the receptacle before disconnecting the product from the extension cord.

PROPER USE OF THE PRESSURE CLEANER

THIS UNIT IS INTENDED FOR USE WITH COLD WATER ONLY!

DO NOT USE HOT WATER IN THIS PRESSURE CLEANER.

1. Operate the pressure cleaner at no more than the fluid pressure rated for the pressure cleaner. Never run the pressure cleaner without a water supply. Running the unit without a water supply will cause irreparable damage to the unit.
2. Make sure that the water supply you use for the pressure cleaner is not dirty, sandy, and does not hold any corrosive chemical products. Using a dirty water supply will compromise the long life of the pressure cleaner.
3. **CAUTION** - The pressure cleaner can be used for a variety of applications including washing cars, boats, patios, decks, garages etc. where high pressure is necessary to remove dirt and debris. High-pressure water flow can damage the work surface if not used properly! See the section titled "Operating Instructions" for more details. Always test the spray in an open area first.
4. **NEVER** move the unit by pulling on the high pressure hose. Use the handle provided on the top of the unit.
5. Always hold the high pressure gun and wand with two hands. Keep one hand on the gun/trigger, while supporting the wand with the other hand (see diagram).
6. When dispensing detergent, the pressure cleaner applies detergent to the cleaning area at low pressure only. Once the detergent has been applied, spray the detergent off of the work area by using the adjustable nozzle.

SPECIFICATIONS

Input power	15A 1800W
Rated Voltage	110-120V
Frequency	60Hz
Rated pressure	90Bar
Max. pressure	135Bar
Rated flow	5.5L/min
Hose length	5m








FUNCTIONS



- | | |
|----------------------|---------------------------|
| 1. Handle | 10. Spray lance |
| 2. Power cord holder | 11. Adjustable nozzle |
| 3. Power cord | 12. Detergent Bottle |
| 4. Water inlet | 13. High pressure hose |
| 5. ON/OFF Switch | 14. Cleaning pin |
| 6. Gun holder | 15. Water inlet connector |
| 7. Water outlet | 16. 1/2" hose connector |
| 8. Nozzle storage | 17. Screws package |
| 9. Gun | |

NOTE: SYMBOLOGY

Pay attention to all the signs and symbols shown in these instructions and on your tool. Make a note of these signs and symbols. If you interpret the signs and symbols correctly, your work with the machine will be safer and better.

	Read the instructions for use before starting the machine.
	Wear safety goggles.
	Always use breathing apparatus when machining materials which generate dust.
	To reduce the risk of injection or injury, never direct a water stream towards people or pets or place any body part in the stream. Leaking hoses and fittings are also capable of causing injection injury. Do not hold hoses or fittings.
	To reduce the risk of injury from kickback, hold the spray lance securely with both hands when the machine is on.
	Failure to use in dry conditions and to observe safe practices can result in electric shock.
	Machine not intended to be connected to the potable water mains

	Indicates a potential personal injury hazard.
	In accordance with European directives applicable to this product.
	Double-insulated construction.
	Do not expose to rain or use in damp locations.
	Warning! Never point the gun to human, animals, the machine body, power supply or any electric appliances.
	Waste electrical products should not be disposed of with household waste, please recycle where facilities exist. Check with your local authority or retailer for recycling advice.
	Recycle unwanted materials instead of disposing of them as waste. All tools, hoses and packaging should be sorted, taken to the local recycling centre and disposed of in an environmentally safe way.

PREPARATION OF OPERATION

HOW TO SET UP YOUR UNIT

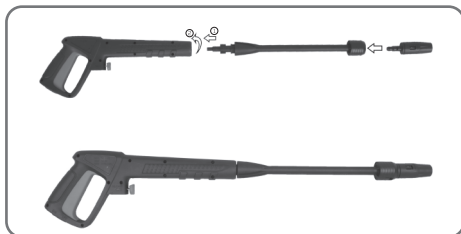
---Ignore the installed accessories in the corresponding step---

1. Attach the gun, quick lance and adjustable nozzle.

A. Attach the quick lance to gun

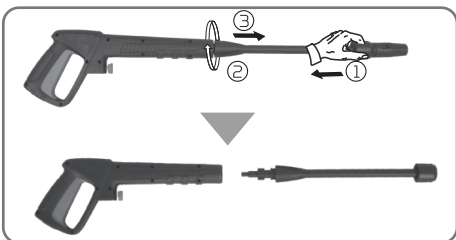
Note: When attaching, align the two projections on the lance with the grooves on the gun.

B. Attach the adjustable nozzle to the spray lance.



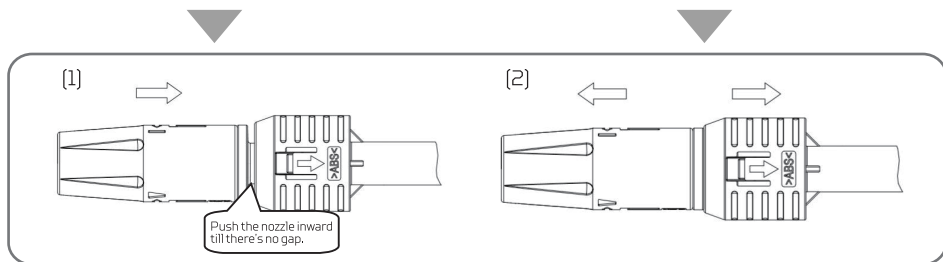
---Pull out the lance---

- ① Push the lance against the spray gun.
- ②③ Rotate the lance and pull it out of the spray gun.



---Operation when the nozzle fails to detach from the lance---

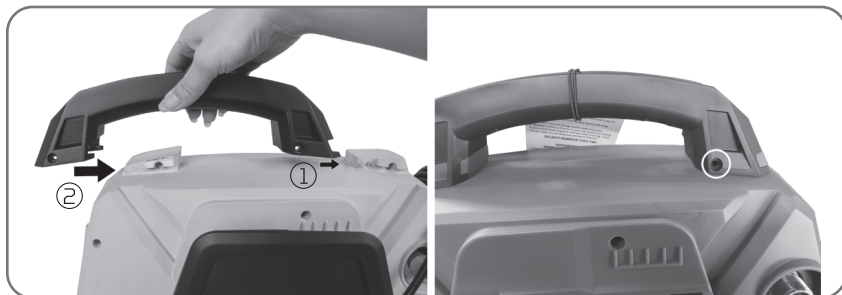
- (1) Push the nozzle inwardly, make sure there's no gap between nozzle and lance head.
- (2) Grasp the nozzle and lance head with two hands and pull them to reversed direction, the nozzle will be detached.



2. Mounting the handle

Slide the handle on the top of the machine.[1 pc M4*16mm]

Note: The screws will be packed together with the manual, pls kindly check and find it when unpacked.



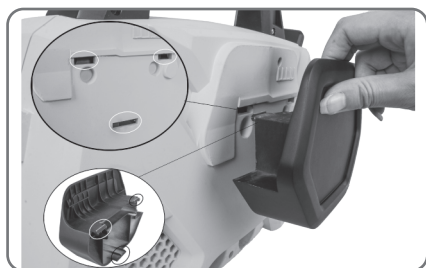
3. Mounting the power cord holder

Slide the power cord holder on the left of the machine.



4. Install gun holder

Attach the gun holder on the back of the machine.



5. Screw the high pressure hose onto the water outlet pipe.

Push and turn clockwise) it tight to avoid leakage. When the pieces are joined properly, you cannot separate the two components by pulling straight out from the water outlet.

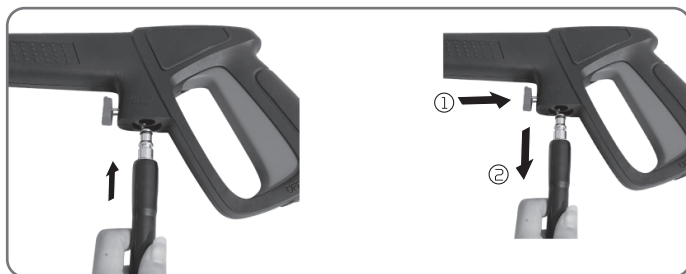
CAUTION: Prior to operating the machine, please ensure that the high pressure hose has been completely uncoiled. Whilst the machine is in operation, the high pressure hose **MUST NOT** loop.



6. Attach the other high pressure hose to the gun.

Note: After the high pressure hose is connected, check the connection by gently pulling on the hose to ensure it stays connected. Push the lock button and pull to detach the high pressure hose.

For detaching the hose easily, please pull the trigger to drain water from wand when operation is completed and switch is in " OFF/O " position..



7. Attach the water inlet connector&inlet hose.

Remove the plastic plug from the machine's water inlet hose, screw the water inlet fitting onto the water inlet, then insert the 1/2 quick connect into the water inlet fitting, then connect one end of a home inlet hose [not supplied] to the quick fitting connect the other end to the water source.<<<If the water inlet connector has been installed, skip the steps for installing the water inlet connector.>>>

For detaching the hose easily, please pull the trigger to drain water from wand when operation is completed and switch is in " OFF/O " position.



8. Connect to the power supplier, Plug the pressure washer into the power outlet.

OPERATING



WARNING - DANGER!

During operation the appliance must be positioned on a firm, stable surface.

WARNING: High pressure hose must not loop.

Starting Up

1. Turn the water source on. Squeeze the trigger about 1 minute until low pressure water flow out to empty air out of the unit.

Warning: This unit is intended to be used with cold water only! Do not use hot water in this pressure cleaner!



2. Turn the switch of the pressure wash to "ON/I" position, then pull the trigger till all the air is pushed out of machine and water flows from the gun.

Note: Before pressing trigger, make sure lock-off switch is in "unlock" position.

Warning: Do not start the machine without connecting and turning on the water supply because it may cause damage to high pressure seals and reduce the service life of pump.



3. Select the right nozzles.

Squeeze the trigger, high pressure water flow will come out. You could rotate.

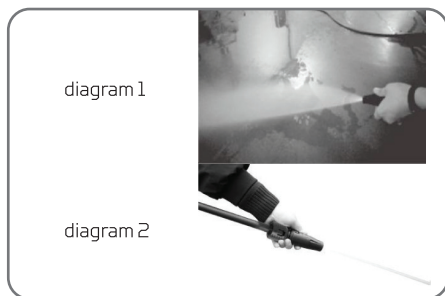
Adjustable nozzle collar to change it from a full fan spray [diagram 1] to a direct stream spray [diagram 2].

Warning: When operating the machine, it is forbidden to use in the inverted state.

Warning: High pressure jets can be dangerous if subject to misuse. The jet must not be directed at persons, live electrical equipment or the appliance itself.

Warning: Do not direct the jet against yourself or others in order to clean clothes or foot-wear.

Warning: Spray gun must be turned off when changing nozzles.

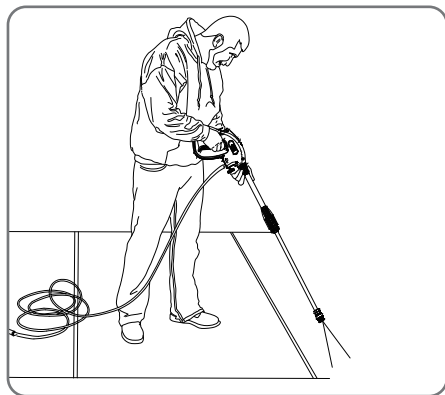


4. Cleaning.

Begin with the nozzle 1-2ft away from the surface and approach with caution until it reaches the desired position for overly close spray may do harm to surface.

Warning: Do not connect the machine to water supplies that are dirty, rusty, muddy, or corrosive.

[Including window cleaning liquids, plant foods, or fertilizers etc.]



***This picture is for use only, please refer to the actual machine you purchased.**

5. When you finish your clean job, release the trigger and turn the switch to " OFF/O " position, then turn off the water supply.

Note: When not in use, make sure Lock-off switch is in " Lock " position.

Note: when using pressure washer after water supply off, serious damage could occur to the pump and / or motor.

Warning: never disconnect high pressure discharge hose from machine while system is pressurized. To depressurize, turn motor off, turn water supply off and squeeze gun trigger 2-3 times.

Warning: never disconnect high pressure discharge hose from machine while system is pressurized. To depressurize, turn motor off, turn water supply off and squeeze gun trigger 2-3 times.

6. Unplug the power cord from the power outlet.

Warning: Check that the supply voltage and frequency correspond to those specified on the appliance data plate. The appliance should only be connected to a mains power supply via a security breaker [Max.30mA] to cut off the electricity supply in the instance of a short circuit.

INFORMATION FOR USAGE

1. Safety valve and/or pressure limiting valve.



WARNING-DANGER!

Do not tamper with or adjust the safety valve setting.

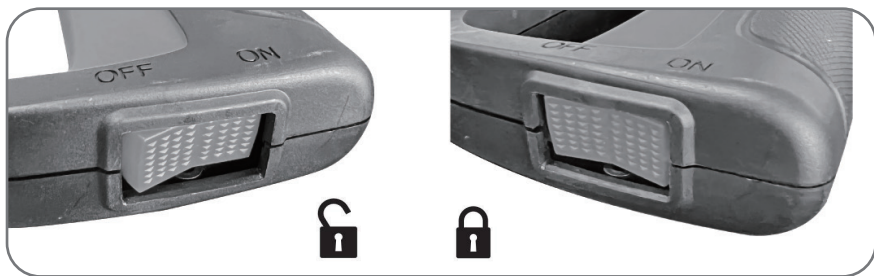
The safety valve is also a pressure limiting valve. When the gun trigger is released, the valve opens, pressure switch action, the machine automatically shut down.

If the gun nozzle is blocked, will cause the machine pressure rises, the safety valve opens, the pressure switch action, the machine automatically shut down, you can refer to the following to use a needle to clean the nozzle.

2. The safety button of gun.

The operator need press the unlock button and then actuate the trigger to do the spray operation. When you release the trigger, it can return to the off position automatically.

When not using the pressure cleaner, press the lock button to keep from accidentally engaging the high pressure spray.

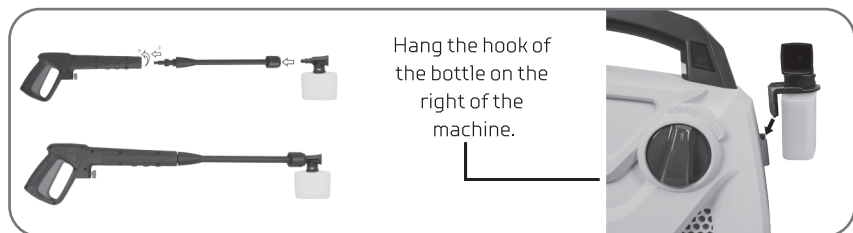


3. Hold the gun.

Whenever you use the high pressure washer, we suggest you grip the in the right position, with one hand on the handle and the other on the adjustable spray nozzle.

4. To wash with detergent.

Rotate the pot body and the spout apart, then add water with a properly prepared cleaner or detergent, pour it into the pot body and close it. Finally attach the detergent bottle to the lance.



- b.** Squeeze the wand trigger, detergent will come out through the nozzle.
- c.** Apply detergent so it thoroughly covers cleaning surface.
- d.** Allow detergent to remain on the surface for a few minutes. This is a good time to use a brush to lightly scrub heavily soiled areas.
- e.** Change to spray nozzle, Rinse detergent from surface.
- f.** Cleaning up: Always draw fresh water through the detergent bottle when done to flush any remaining detergents from the injection system. The bottle could be detached if necessary in this process.

MAINTENANCE

Any maintenance operations not covered by this chapter should be carried out by an Authorized sales and service centre.



WARNING-DANGER !

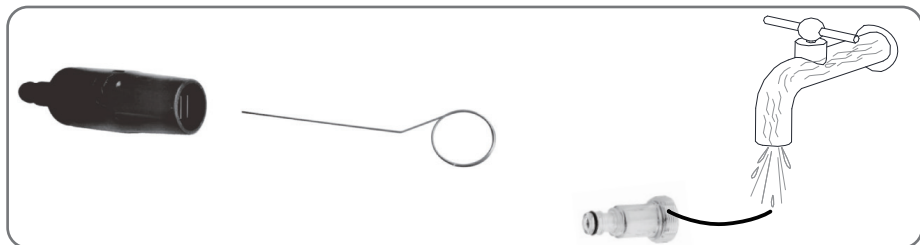
Always disconnect the plug from the power socket before carrying out any work on the appliance.

1. Cleaning of water inlet filter.

The water filter was installed inside the water inlet connector, should be cleaned periodically. Rinse it with clean tap water, and then place it back into the water inlet connector.

2. Cleaning the nozzle.

Using the nozzle tip cleaner provided (or an unfold paper clip), insert the wire into the nozzle hole and move back and forth until debris is dislodged. Back flush water through the nozzles using garden hose and highest pressure available (either standard water nozzle or use your thumb over the nozzle to create water pressure for back flush).



3. Cleaning of machine vents.

The machine should be kept clean so as to let cooling air pass freely through the machine vents.

4. Greasing or couplings.

To ensure easy connection and that o-ring do not dry up, the couplings should be greased regularly.

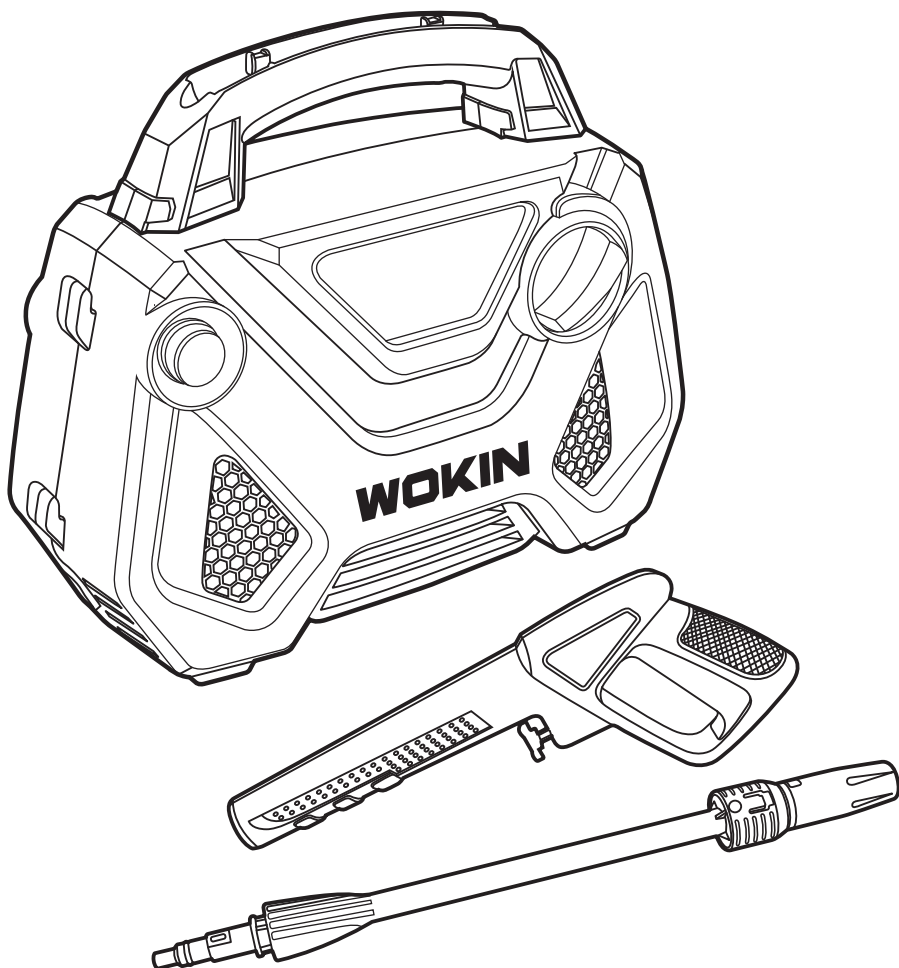
STORAGE

1. Disconnect the water source, turn on the pressure washers for a few seconds until the remaining water flows out, then turn it off quickly.
2. Unplug the power supply.
3. Disconnect the high pressure hose and the garden hose (no supplied), and coil high pressure hose for storage.
4. Store in a frost free area with a temperature above 00C(320F).

TROUBLESHOOTING

Please ensure that you check the following before contacting the service organization:

Symptom	Cause	Recommended action
Machine refuses to start.	<ol style="list-style-type: none"> 1. Machine not plugged in. 2. Defective socket. 3. Fuse has blown. 4. Defective extension cable. 	<ol style="list-style-type: none"> 1. Plug in machine. 2. Try another socket. 3. Replace fuse, switch off other machines. 4. Try without the extension cable.
Fluctuating pressure.	<ol style="list-style-type: none"> 1. Pump sucking air. 2. Valves dirty, worn out or stuck. 3. Pump seals worn out. 	<ol style="list-style-type: none"> 1. Check that hoses and connections are airtight. 2. Clean and replace or refer to local distributor. 3. Clean and replace or refer to local distributor.
Machine stops.	<ol style="list-style-type: none"> 1. Fuse has blown. 2. Incorrect mains voltage. 3. Thermal sensor activated. 4. Nozzle partially blocked. 	<ol style="list-style-type: none"> 1. Replace fuse. Switch off other machines. 2. Check that the mains voltage corresponds to specification on the model tag. 3. Leave the washer for 5 minutes to cool down. 4. Clean the nozzle.
Fuse blows.	Fuse too small.	Change to an installation higher than the amp. Consumption of the machine. You may try without the extension cable.
Machine pulsating.	<ol style="list-style-type: none"> 1. Air in inlet hose/pump. 2. Inadequate supply of mains water. 3. Nozzle partially blocked. 4. Water filter blocked. 5. Hose kinked. 	<ol style="list-style-type: none"> 1. Allow machine to run with open trigger until regular working pressure resumes. 2. Check that the water supply corresponds to specifications required. 3. Clean the nozzle. 4. Clean the filter. 5. Straighten out hose.
Machine often starts and stops by itself.	Spray handle is leaking.	<ol style="list-style-type: none"> 1. Contact your nearest service centre. 2. Replace seat/ball/o-ring in the valve of the spray handle.
Machine starts, but no water comes out.	<ol style="list-style-type: none"> 1. Pump/hose or accessory frozen. 2. No water supply. 3. Water filter blocked. 4. Nozzle blocked. 	<ol style="list-style-type: none"> 1. Wait for pump/hoses or accessory to thaw. 2. Connect inlet water. 3. Clean the filter. 4. Clean the nozzle.



**ZJG WOKIN
INDUSTRIAL
CO.,LTD.**

www.wokintools.com

**PROFESSIONALLY
MADE IN CHINA**

WOKIN is a trademark or
registered trademark of
WOKIN TOOLS.
All rights reserved.

